

**X-FORCE-SCAN**  
Securing quality through homogeneity

## FORCE Technology's X-ray sensor expertise

FORCE Technology is one of the top international players when it comes to on-line production control using X-ray technology. Over the years, we have developed, manufactured and installed production monitoring systems for a wide number of industries e.g. candy, wood panel, mattress, pre insulated pipes and insulation.

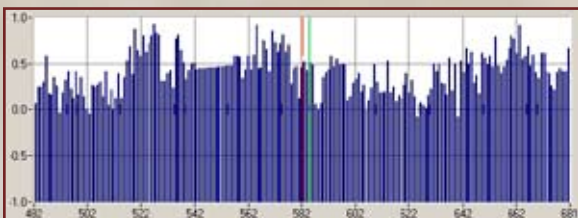
No project is too large nor too small for us. We offer our customers a complete turn-key project from start to finish with tailored installation of our X-ray sensor system into your existing production line and a reliable after sales service.

We know the challenges you face, when you have to stay ahead of your competitors. That is why we strive to be two steps ahead of our own competitors, so that we can offer you the best possible solution to your specific challenge.

## X-ray solutions

With our state-of-the-art X-ray solutions, we are probably one of the most flexible suppliers on the world market. Many different industries can benefit from introducing our system into their production.

Our sensor solutions are extremely reliable with a broad range of output possibilities to choose between. Something we have achieved only by using quality components which have proven their high standards again and again. Also, when choosing FORCE Technology's on-line sensorsystems, you will be able to work with tailor-made software options like you haven't seen them before. Easy and quick to handle!



Cross sectional view - short term, high resolution.

## Mechanical and electrical production integration

FORCE Technology cooperates only with recognized suppliers i.e. suppliers which are widely used by key industry players. We also help you with the challenges you face in connection with a clean environment.

## Installation

To make a perfect productionline set-up, we are working with the most competent electricians and smiths together with highly trained and experienced X-ray technicians. Our focus is on a quick and accurate installation.

## Dealing with the authorities

Due to our broad range of international customers, we are used to taking care of the necessary authority approvals when it comes to X-ray equipment. We function as the mediator between the customer and the local authorities in order to make the process as easy and fast as possible.

## Call service

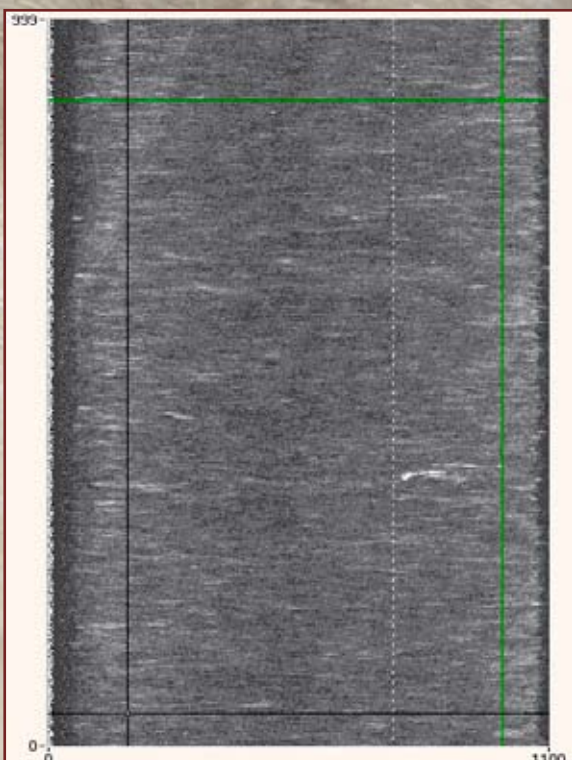
During the whole warranty period, you will have full access to FORCE Technology's team of professional specialists who are ready to help you with any problem that may occur. After the warranty period, we can adjust our level of service to your specific needs and demands.



Visualisation of line control information. Distribution and average area-weight.

## Why choose sensor systems from FORCE Technology?

- High measurement accuracy in absolute terms
- Easy integration with existing production equipment and control systems leads to greater output
- High homogeneity means savings of raw-materials and satisfied customers
- High yield
- Proved concept and high reliability
- Designed and developed for insulation production in close collaboration with end-user
- Statistical Process Control (SPC) gives solid documentation to end-user of a homogeneous product
- Long lasting X-ray source and high quality components
- Professional project control leads you safely through the stages of design, production integration and after sales service
- Replaces and outperforms existing isotope systems.



*User configurable visualisation of production homogeneity (length, width and resolution).*

## Technical specifications

- Line width: up to 3,000 mm
- Line speed: 1-30 m/min
- Mat height: 10-550 mm
- Area weight: 0-100 Kg/m<sup>2</sup>
- Resolution: Adjustable from 1x1 mm
- Accuracy: <0.03 Kg/m<sup>2</sup> or < 1%
- Calibration: Automatic
- Building height over line: ~4 meter
- Service: Remote access/control by phone and/or LAN
- Power consumption: < 900W/230VAC

### Line Control:

- 6 user-configurable analog outputs
- Digital status and control signals
- TCP/IP
- Optional PROFIBUS.

### User Interface:

- Operationable by line-control digital-IO only
- Graphical visualisation and control. Different levels of access.
- TCP/IP
- Optional PROFIBUS.

### Documentation:

- Enhanced local data storage facilities
- RealTime export (TCP/IP) for SPC (Statistical Process Control).

FORCE Technology has among others developed, delivered and installed advanced scanning technology to the following industries:

- Insulation
- Mattress
- Food
- District heating
- Recycling
- Fiberboard
- Space.



Further information:  
Stig Vilsen, tel. (direct) +45 43 26 73 93, sv@force.dk

Subject to changes without notice

FORCE Technology USA Inc.  
Tel. +1 713 975 8300  
FORCE Technology Rusland LLC  
Tel. +7(812) 326 80 92

FORCE Technology Norway AS  
Claude Monets allé 5  
1338 Sandvika, Norway  
Tel. +47 64 00 35 00  
Fax +47 64 00 35 01  
info@forcetechnology.no

FORCE Technology Sweden AB  
Tallmätargatan 7  
721 34 Västerås, Sweden  
Tel. +46 (0)21 490 3000  
Fax +46 (0)21 490 3001  
info@forcetechnology.se

FORCE Technology, Headquarters  
Park Allé 345  
2605 Brøndby, Denmark  
Tel. +45 43 26 70 00  
Fax +45 43 26 70 11  
force@force.dk  
www.forcetechnology.com